

# Operational Overview

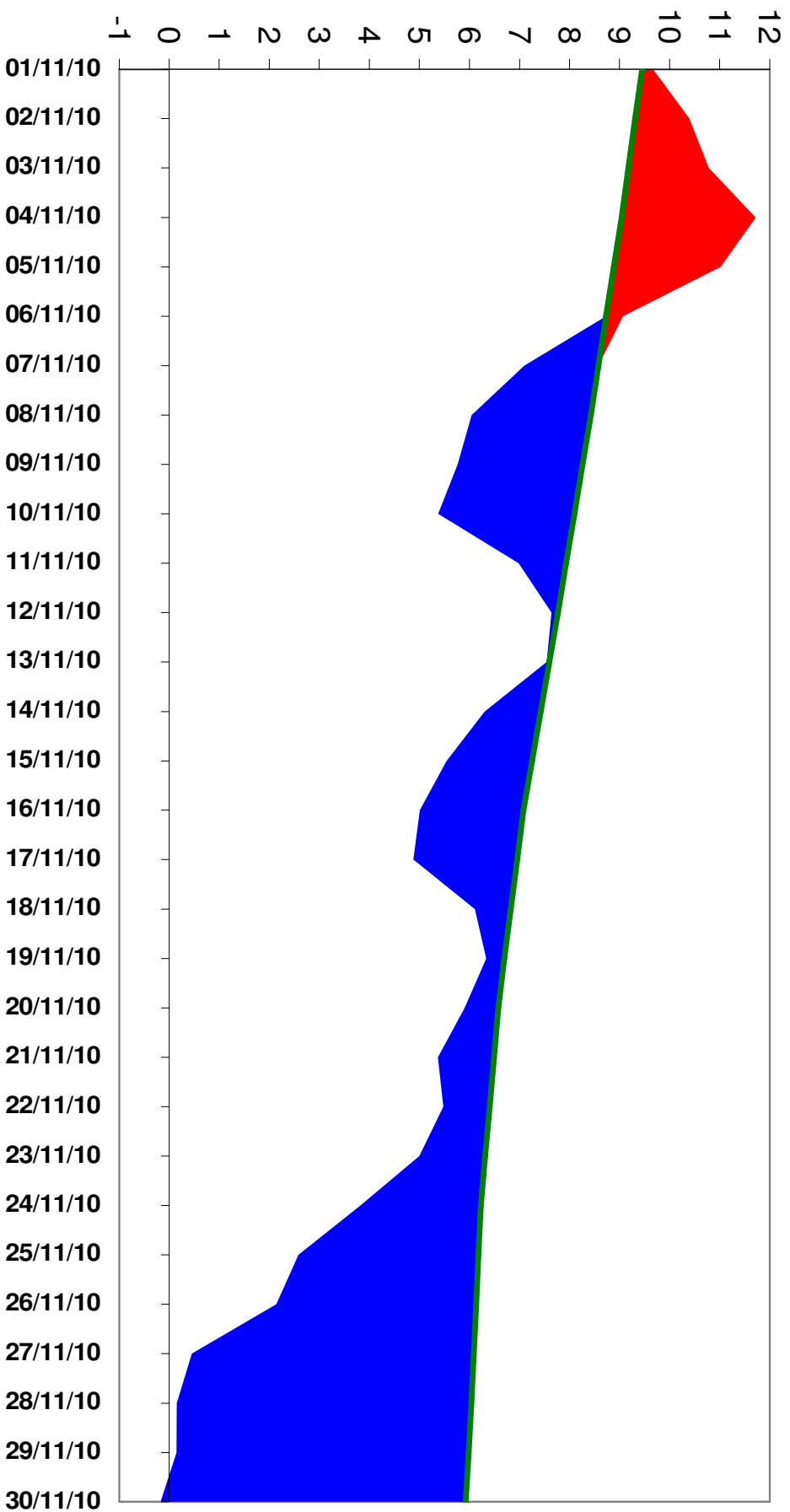


# Weather



# Weather – November 2010

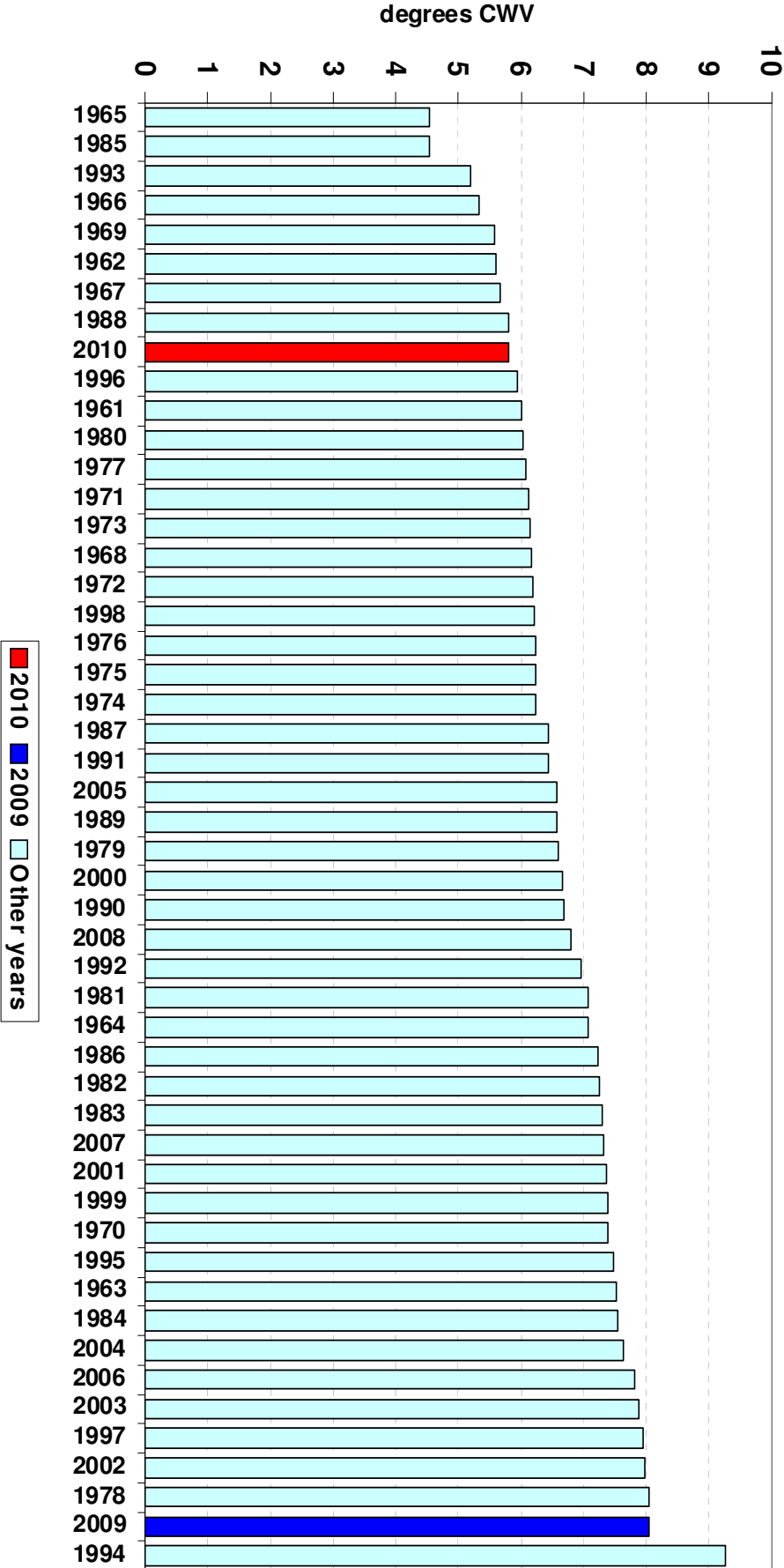
**National CWV and EP2 SNCW**



# Mean Composite Weather Variables – November 2010



Mean National Composite Weather for November

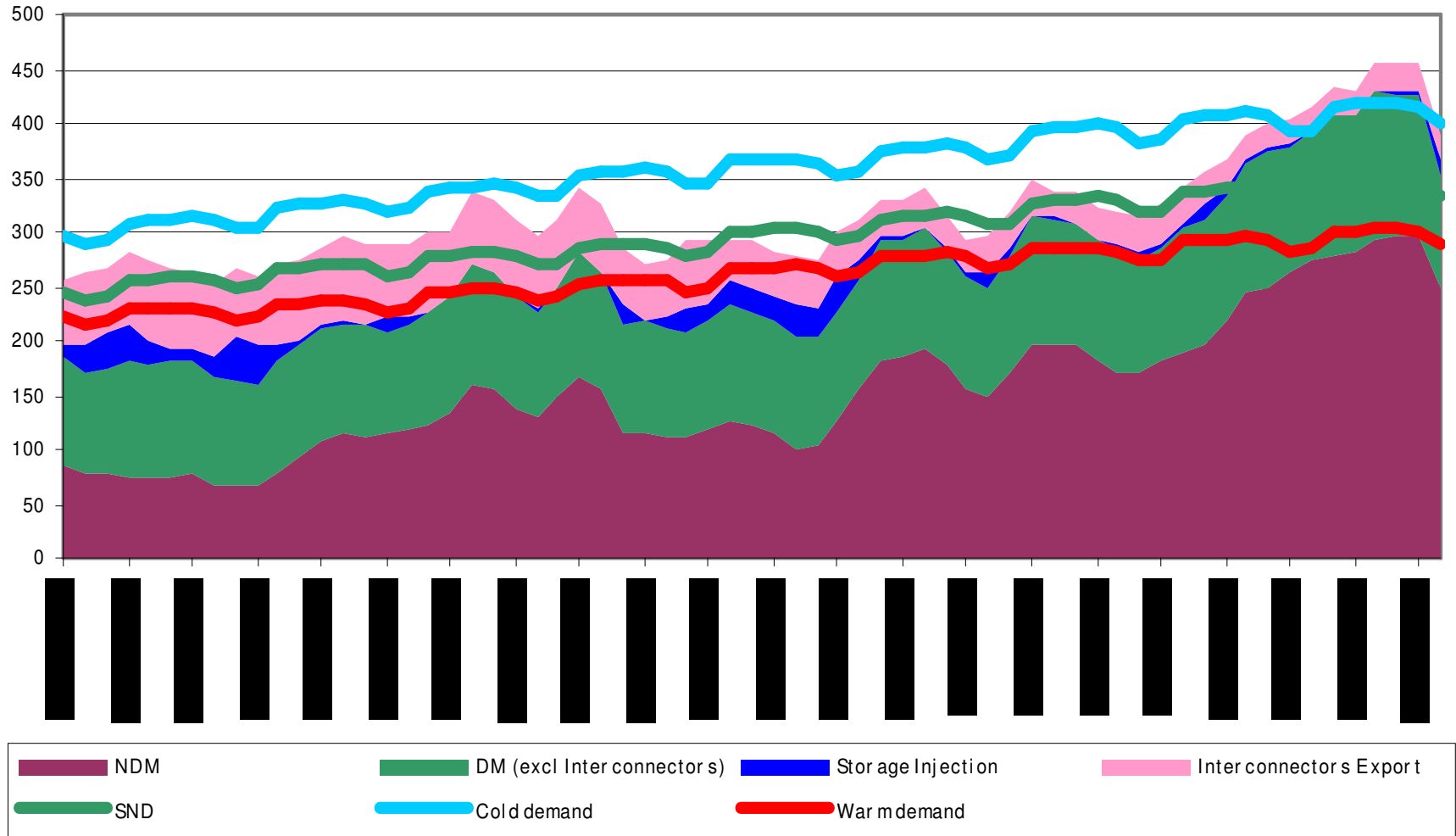


# Demands



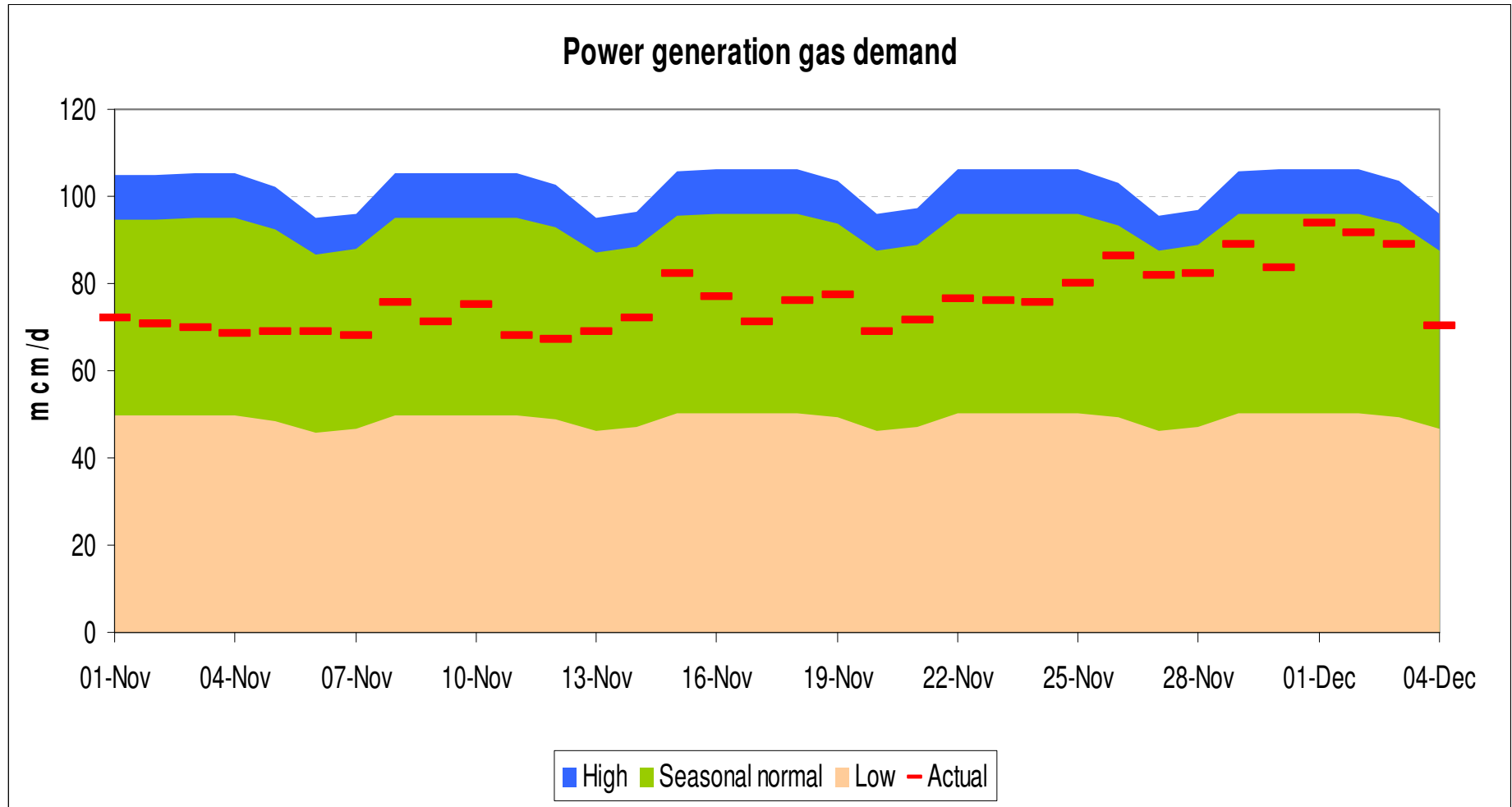
# Gas Demand Breakdown

1<sup>st</sup> October 2010 to 4<sup>th</sup> December 2010



# Power Generation

1<sup>st</sup> November to 4<sup>th</sup> December 2010



# Supplies

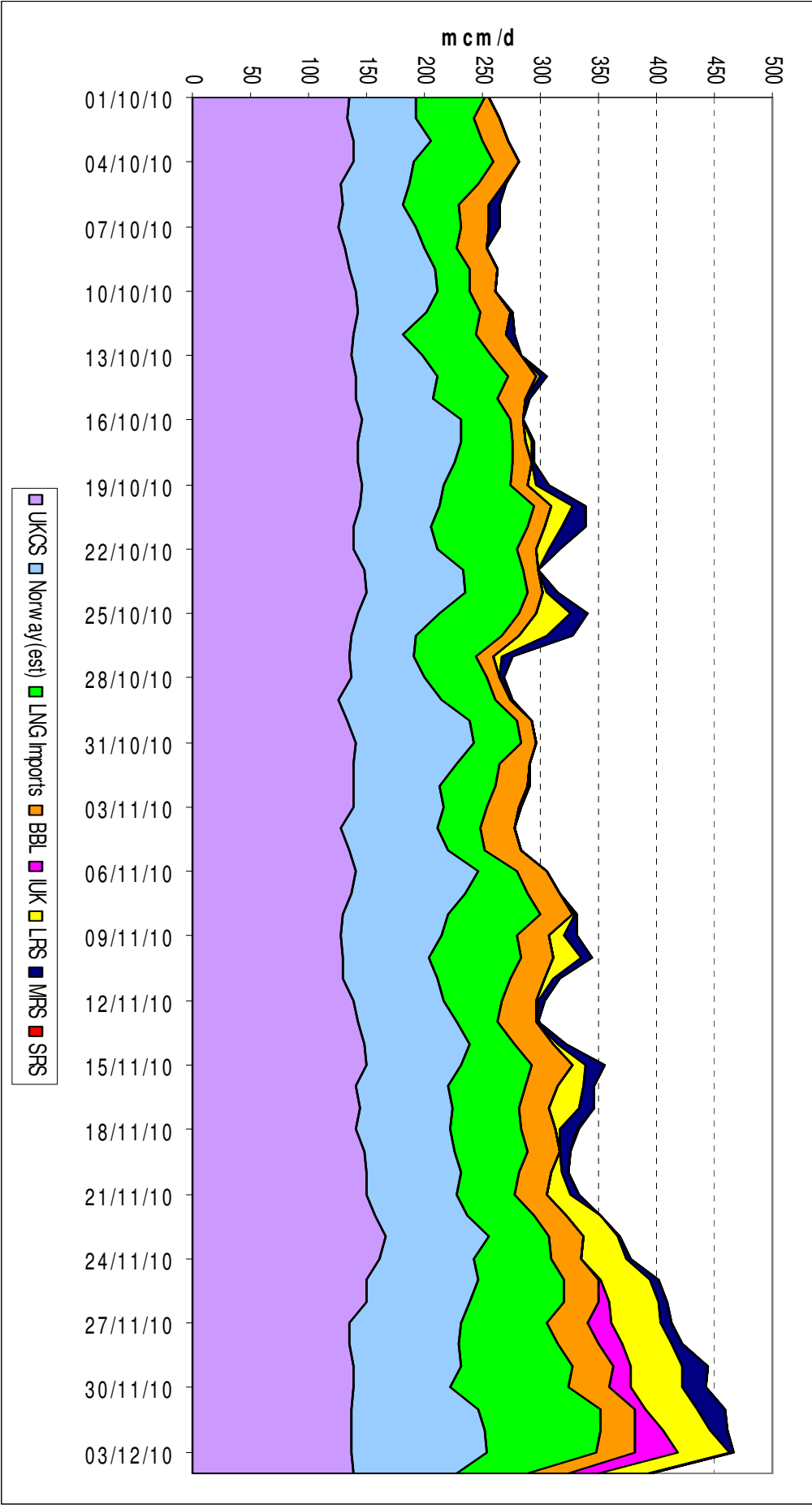




# Gas Supply Breakdown

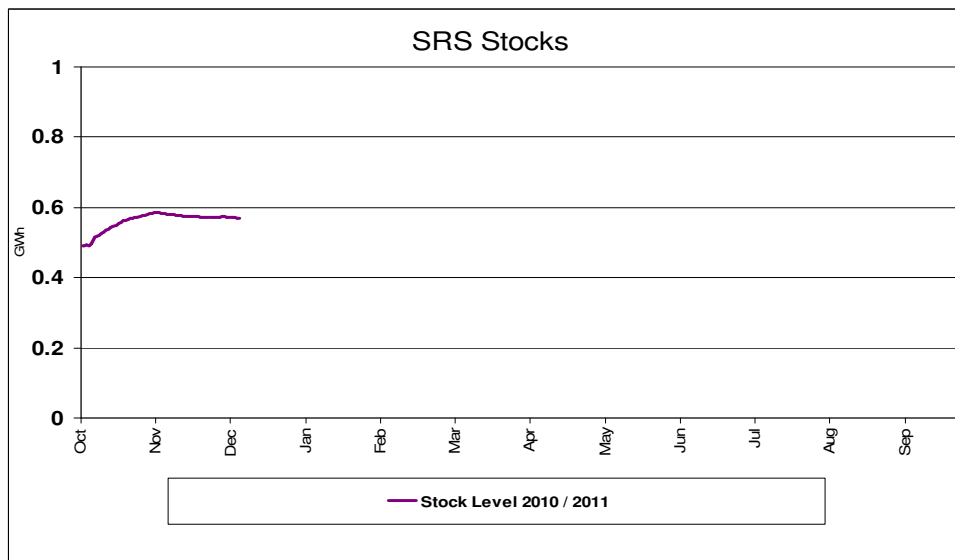
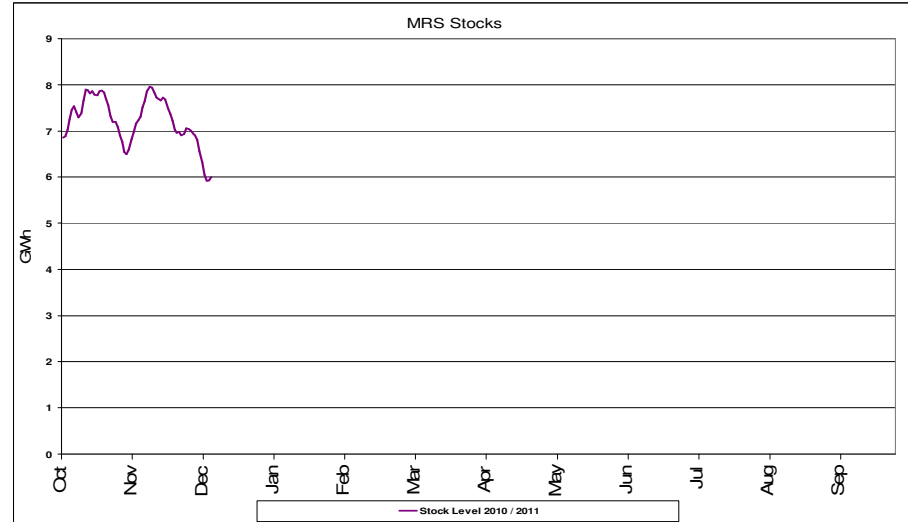
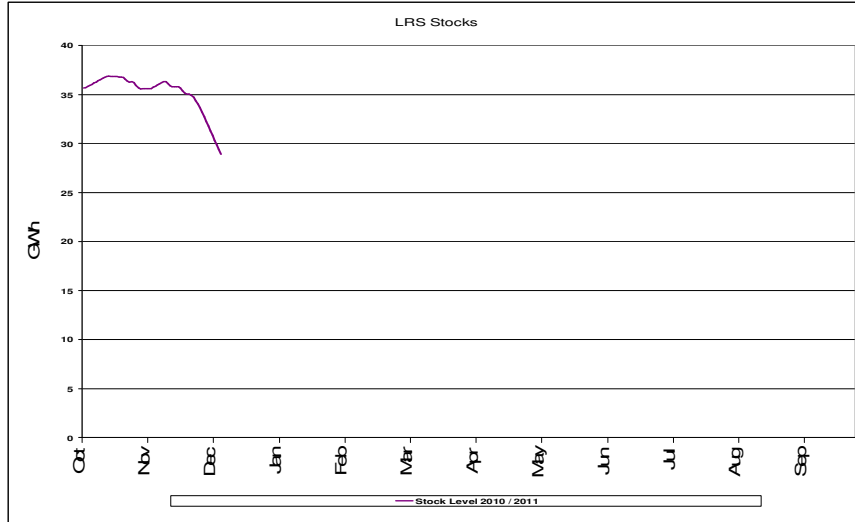
1<sup>st</sup> October 2010 to 4<sup>th</sup> December 2010

**nationalgrid**  
THE POWER OF ACTION



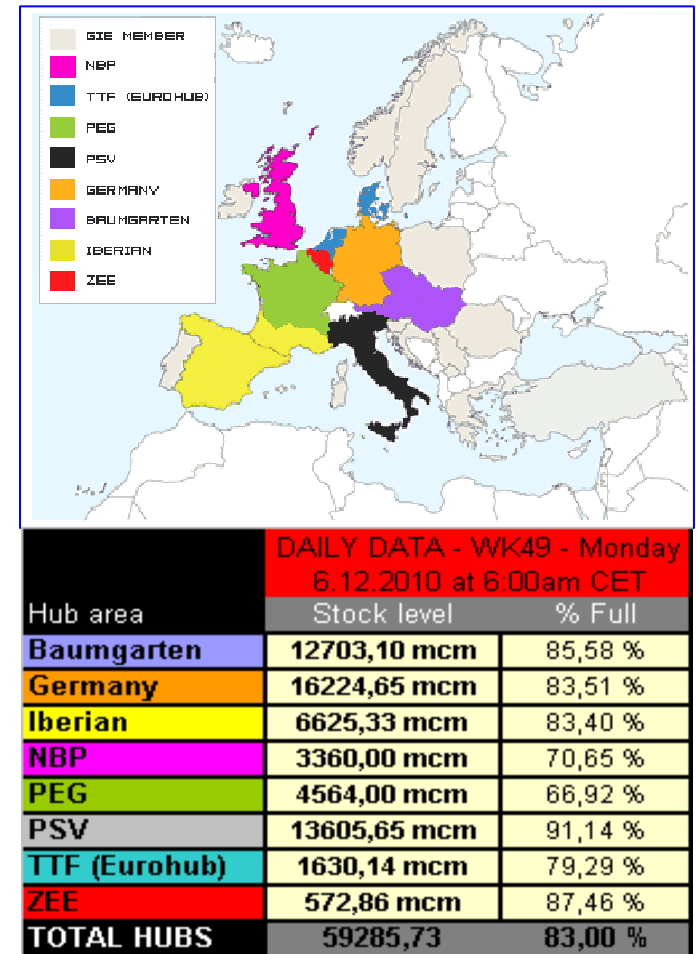
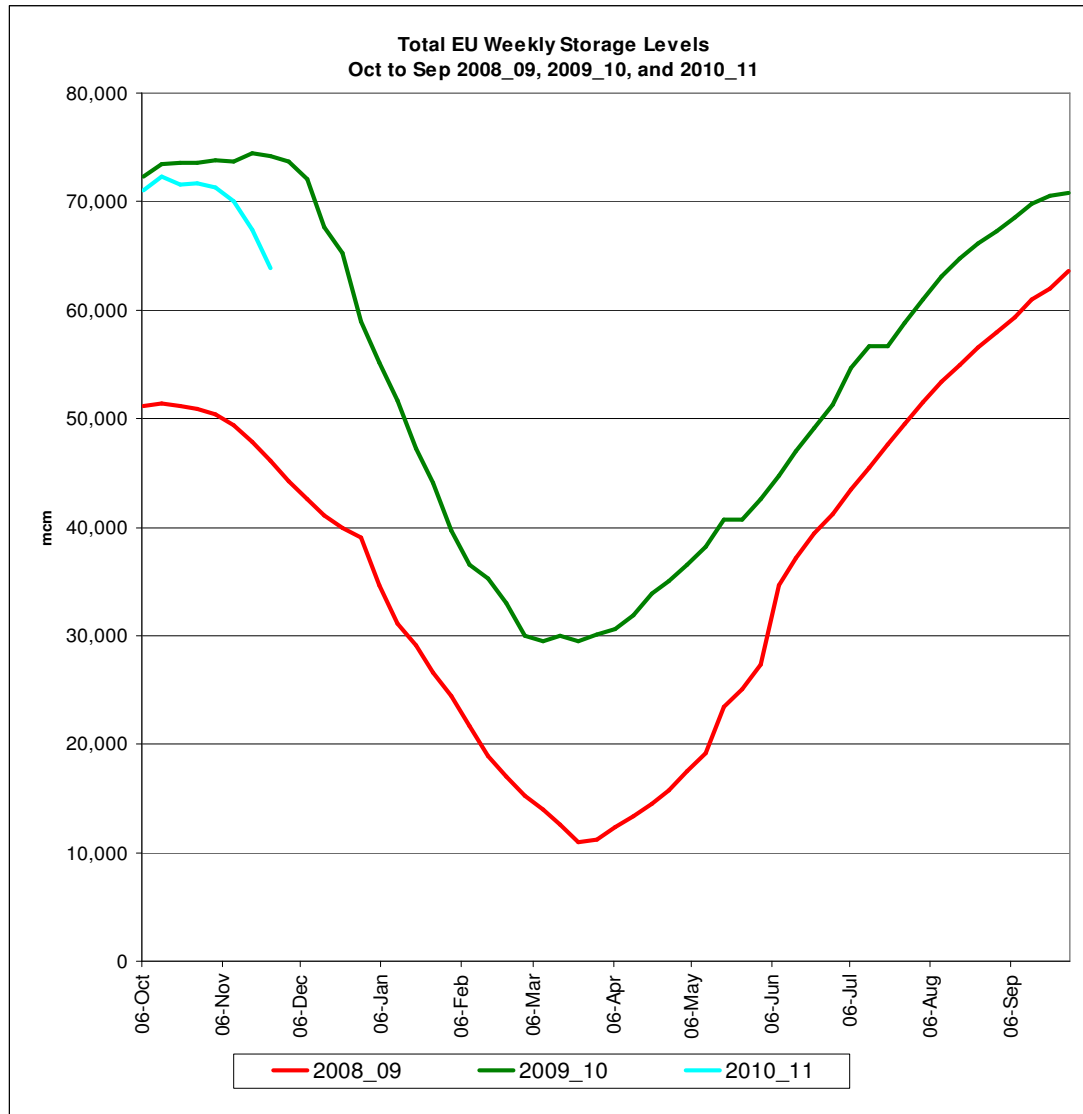
# Storage Stocks - UK

From 1<sup>st</sup> October 2010 to 5<sup>th</sup> December 2010



# Storage Stocks - EU

From 1<sup>st</sup> October 2010 to 6<sup>th</sup> December 2010

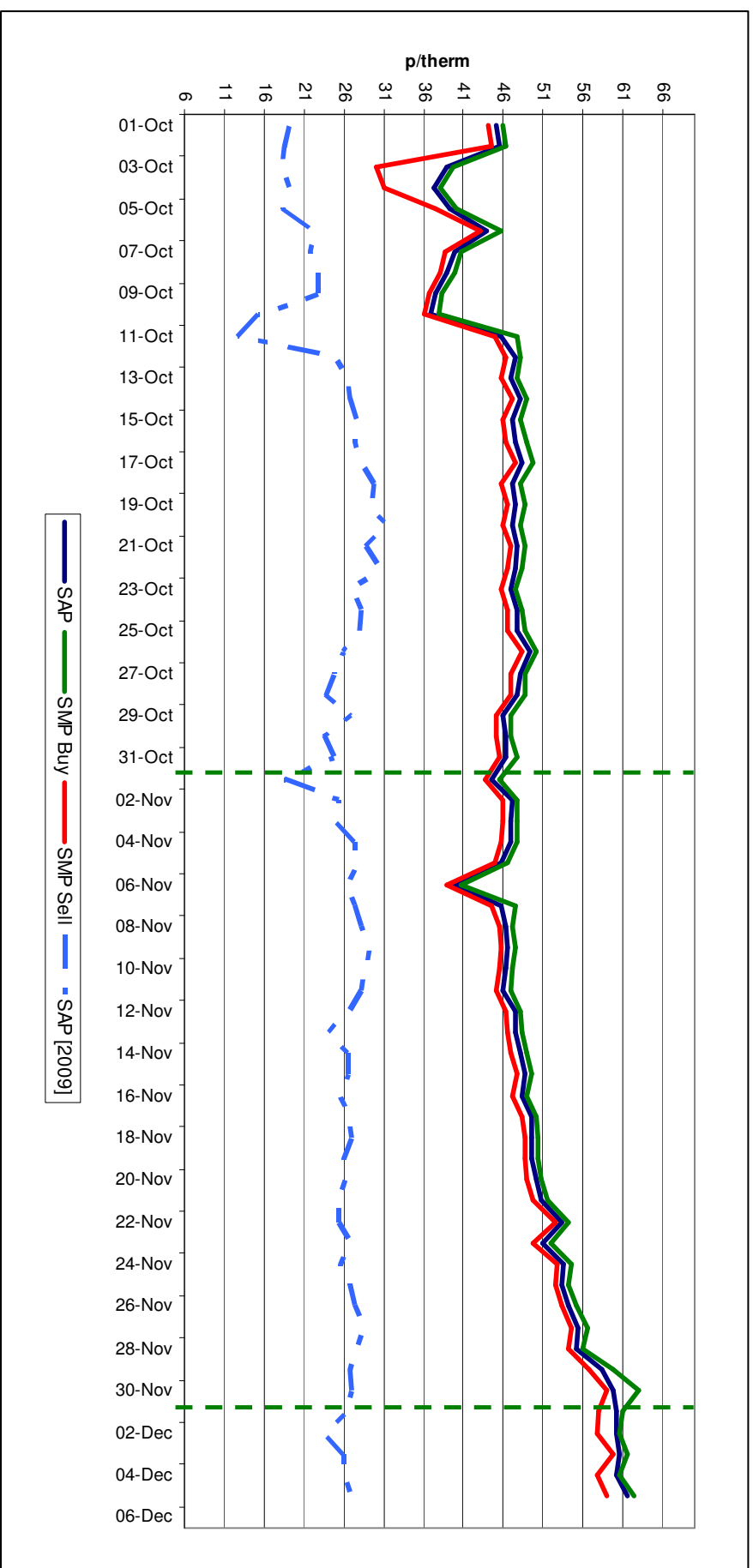


# Transporter Actions and Neutrality



# System Prices

1<sup>st</sup> October 2010 to 5<sup>th</sup> December 2010



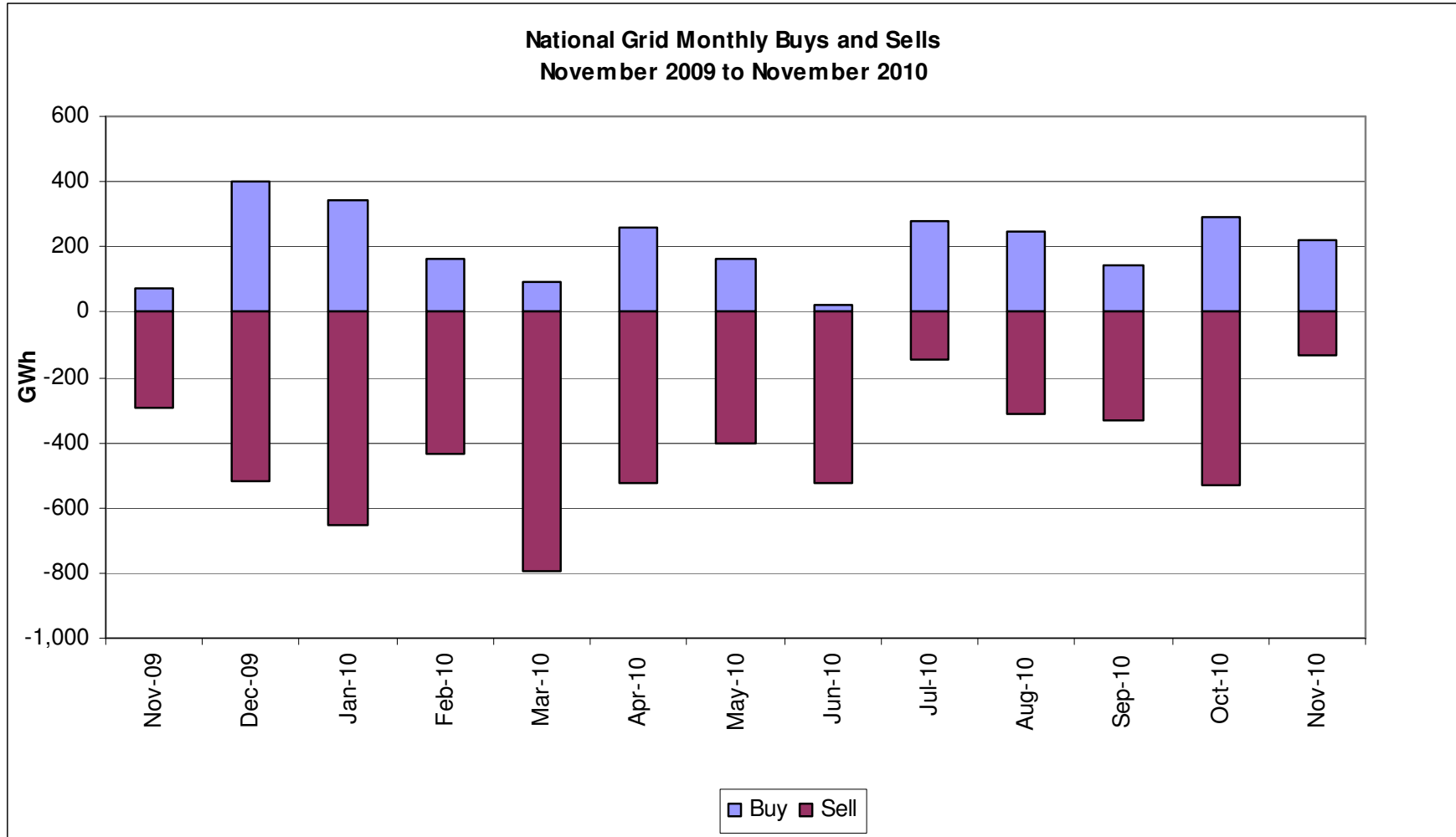
# Transporter Energy Traded on the OCM

Buys and Sells by Month

From November 2009 to November 2010



THE POWER OF ACTION



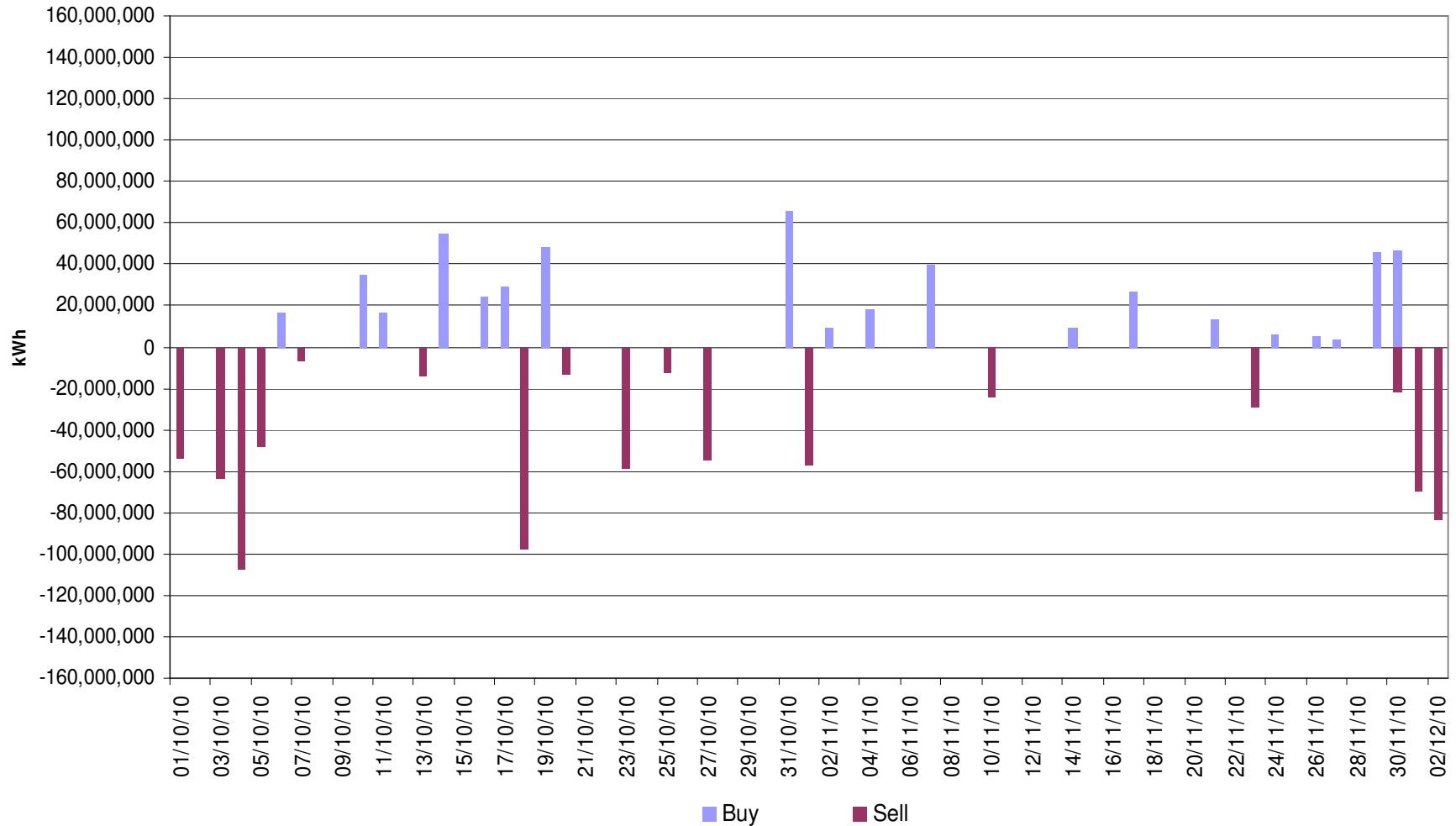
# Transporter Energy Traded on the OCM

Buys and Sells by Day

From 1<sup>st</sup> October 2010 to 2<sup>nd</sup> December 2010



THE POWER OF ACTION

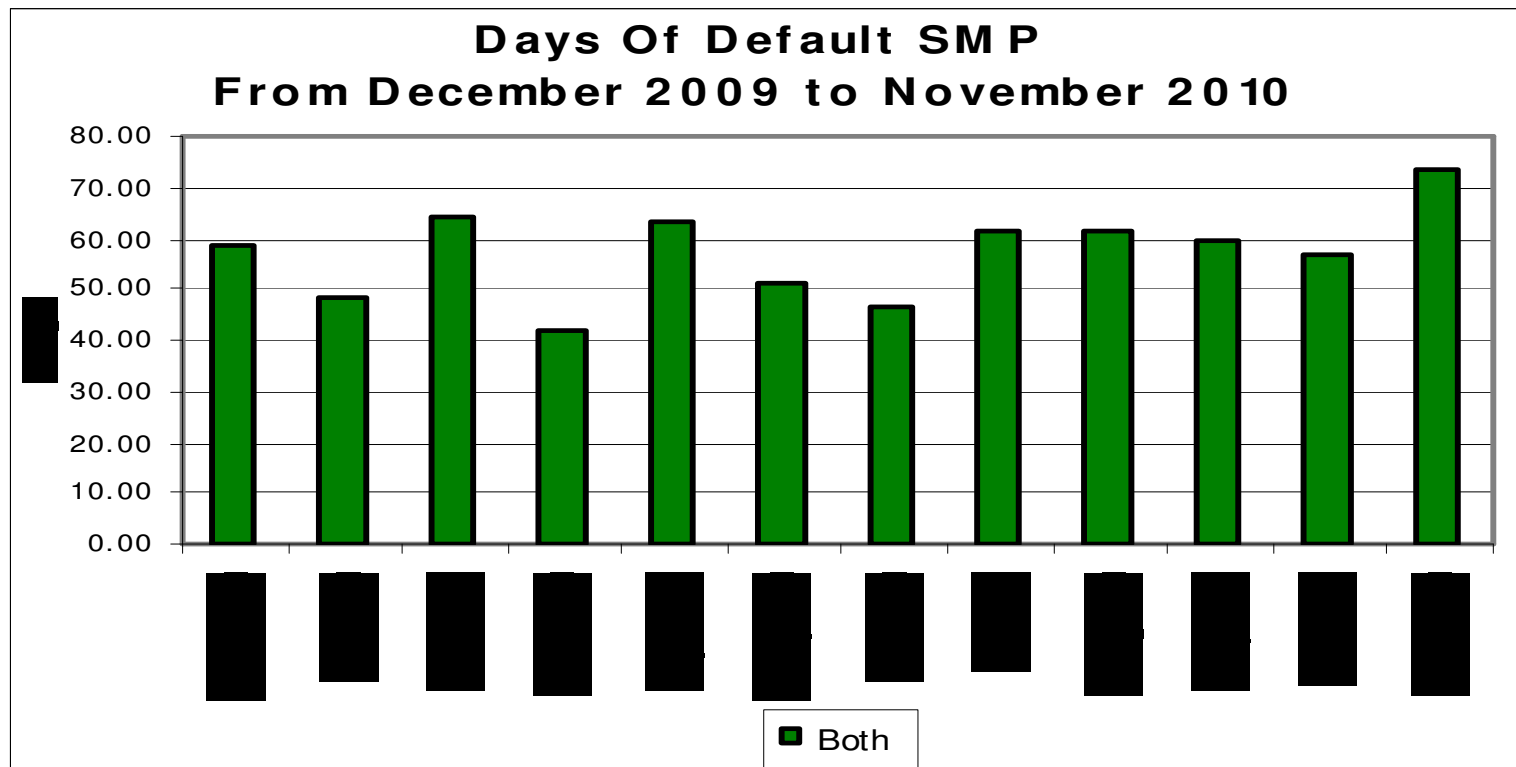


# Days of Default SMP Prices

From 1<sup>st</sup> November 2010 to 30<sup>th</sup> November 2010

## Percentage of Days of Default SMP

SMP Buy	SMP Sell	Both
80.0%	90.0%	73.3%



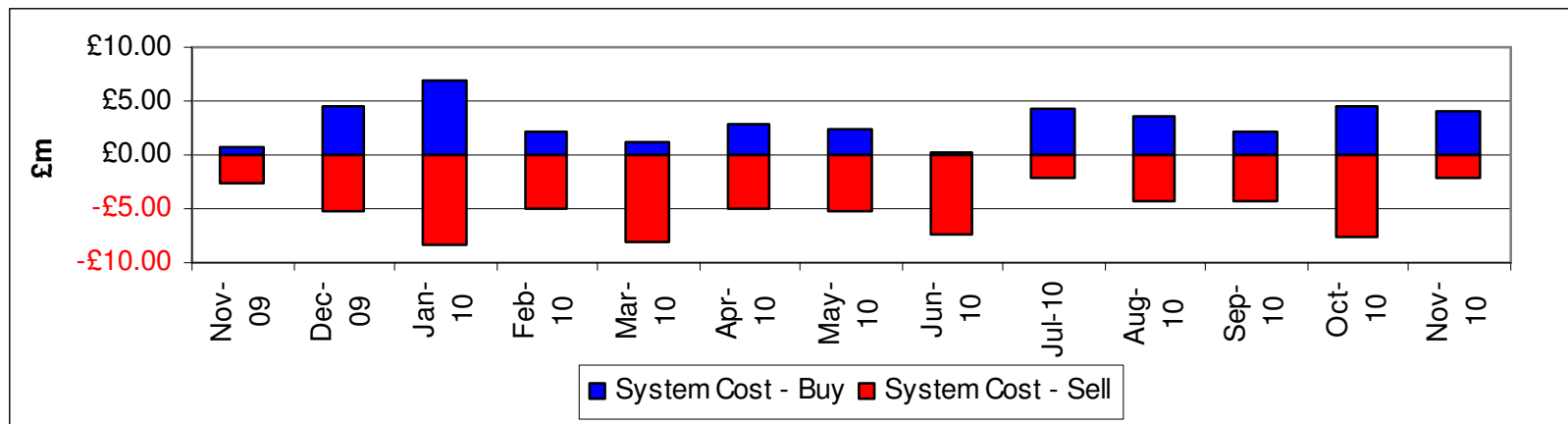


# Transporter Actions on the OCM Mechanism

## Revenues / Costs

From 1<sup>st</sup> October 2010 to 30<sup>th</sup> November 2010

	Quantity (TWh)	Average Price (p/KWh)	Average Price (p/therm)	Cost (£m)
<b>System Buy</b>	<b>0.51</b>	<b>1.69</b>	<b>49.63</b>	<b>£8.68</b>
<b>System Sell</b>	<b>-0.66</b>	<b>1.48</b>	<b>43.35</b>	<b>-£9.78</b>
<b>Net Position</b>	<b>-0.15 Sell</b>			<b>-£1.10</b>



# Shipper Imbalances

## Revenues / Costs

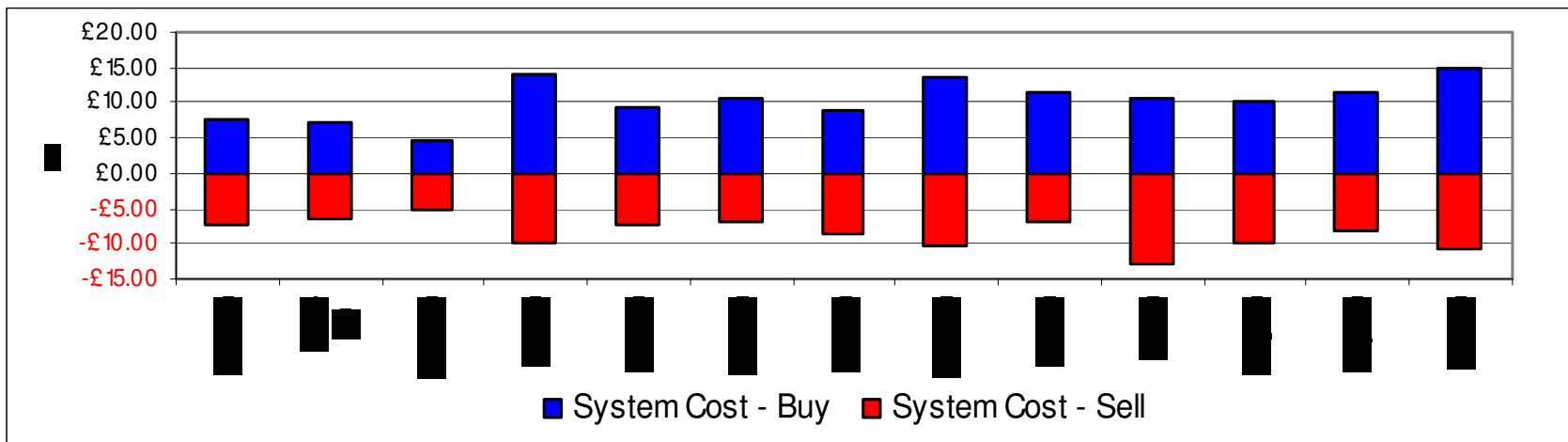
From 1<sup>st</sup> October 2010 to 31<sup>st</sup> October 2010

System	Quantity (TWh)	Average Price (p/KWh)	Average Price (p/therm)	Cost £m
<b>System Buy</b> Shipper overdelivery/cost to neutrality	1.03	1.44	42.05	£14.83
<b>System Sell</b> Shipper underdelivery/revenue to neutrality	-0.67	1.58	46.20	-£10.52

### Net Position

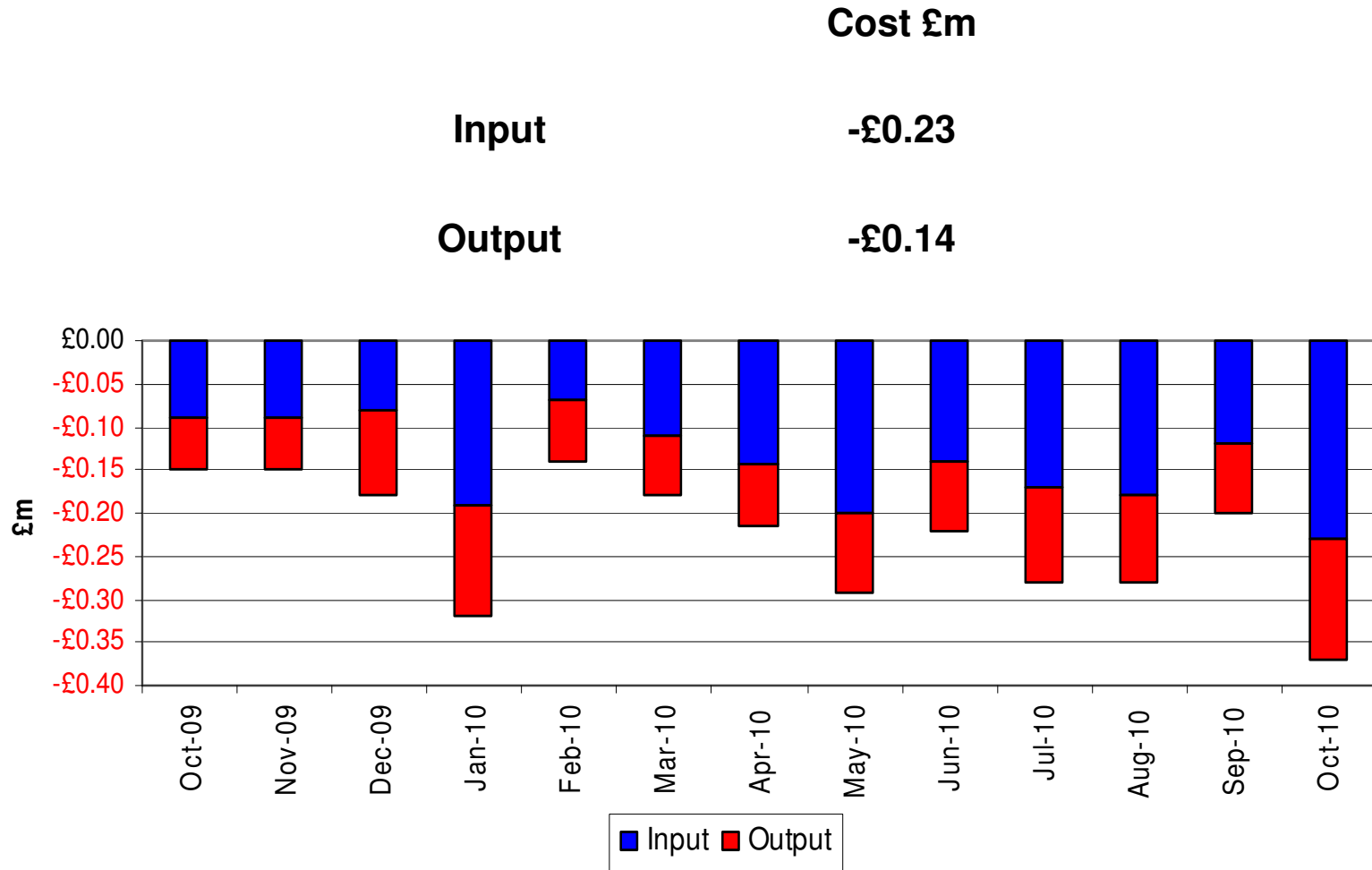
0.36 Buy

£4.31



# Scheduling Revenues

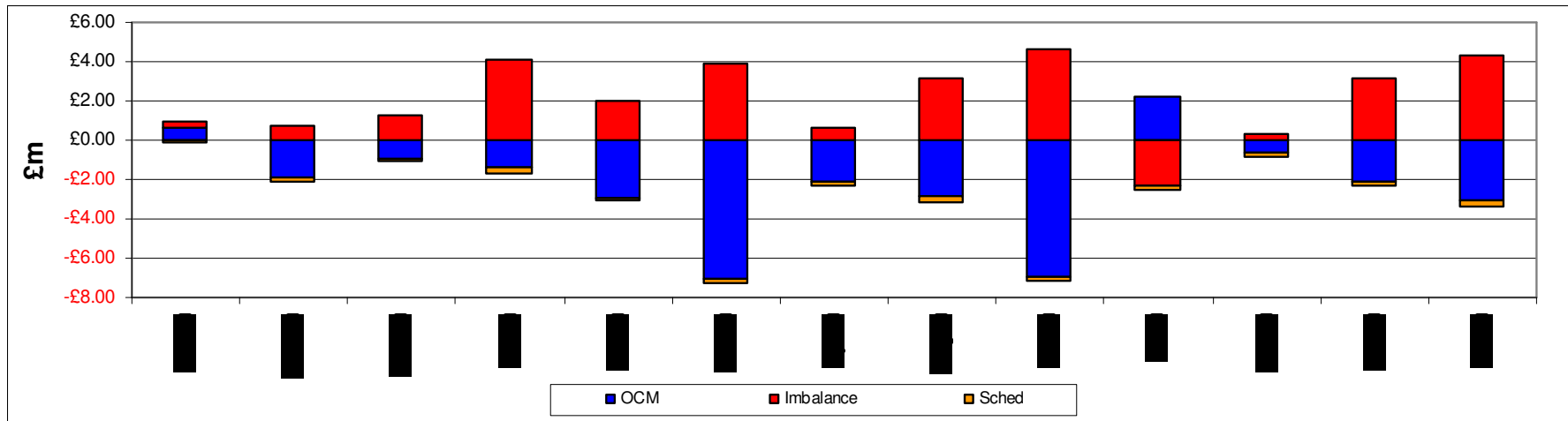
From 1<sup>st</sup> October 2010 to 31<sup>st</sup> October 2010



# Balancing Costs

From 1<sup>st</sup> October 2010 to 31<sup>st</sup> October 2010

	£m
Transporter actions on OCM	-3.03
Imbalance Charge	4.31
Scheduling Charge	-0.37
<b>Balancing Cost</b>	<b>0.91</b>



# Capacity Neutrality

Revenues from DSEC and DAI

From 1<sup>st</sup> April 2010 to 31<sup>st</sup> October 2010

ASEP	Revenue
St Fergus	-£101,573.18
Teesside	-£9,702.13
Barrow	-£3,224.47
Theddlethorpe	-£12,359.52
Easington	-£107,656.09
Bacton	-£32,364.11
Other	-£59,597.05
<b>TOTAL</b>	<b>-£326,476.55</b>



# Capacity Neutrality

## Prompt Buy Backs

From 1<sup>st</sup> April 2010 to 31<sup>st</sup> October 2010

**nationalgrid**

THE POWER OF ACTION

ASEP	Cost	No.of days	Volume (kWh)
St Fergus	£0	0	0
Teesside	£0	0	0
Barrow	£0	0	0
Theddlethorpe	£0	0	0
Easington	£0	0	0
Bacton	£0	0	0
TOTAL	£0	0	0

# Capacity Neutrality

## Capacity Management Agreement (Including RMTTSEC)

From 1<sup>st</sup> April 2010 to 31<sup>st</sup> October 2010

---

Month	Cost
April 2010	£0.00
May 2010	£0.00
June 2010	£0.00
July 2010	£0.00
August 2010	£0.00
September 2010	£0.00
October 2010	£0.00
Total	£0,00

# Capacity Neutrality

Revenues from Entry Capacity Overruns  
 From 1<sup>st</sup> April 2010 to 31<sup>st</sup> October 2010

Month	Revenue
April 2010	
May 2010	-£13,825.95
June 2010	-1,083.26
July 2010	-77,085.71
August 2010	-652.54
September 2010	-£1,190.84
October 2010	-£2,977.87
Total	-£96,816.17 *

\* Excluding Entry Capacity Overrun Charges from April 2010



# Capacity Neutrality Net Cost / Revenue

From 1<sup>st</sup> April 2010 to 31<sup>st</sup> October 2010

DSEC/DAI Revenue	-326,476.56
Buy back costs	£0.00
Capacity Management Agreement	£0.00
Entry Capacity Overrun Revenue *	-£96,816.17
Net Revenue	-£423,292.73

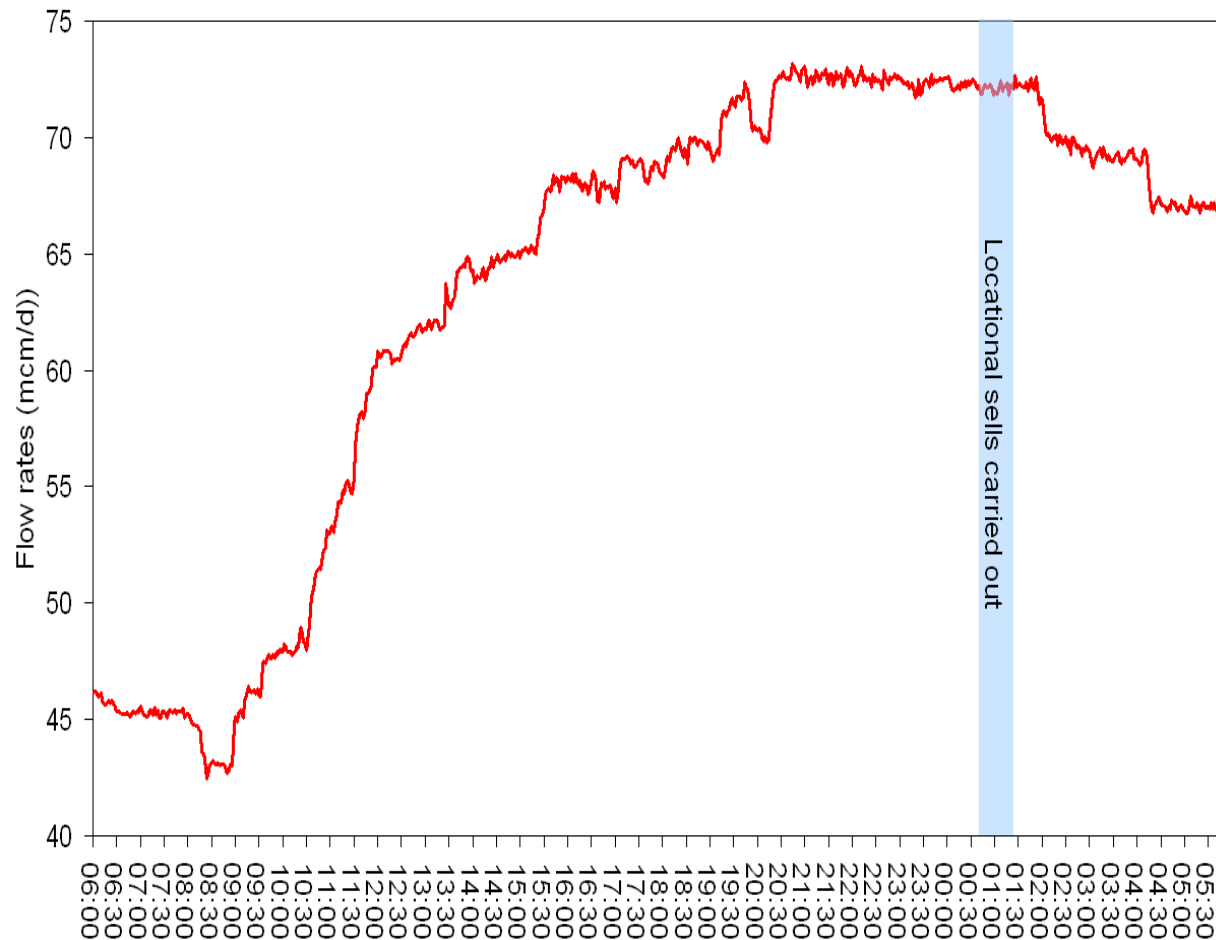
\* Excluding Entry Capacity Overrun Charges from April 2010

# Locational Balancing Action



# 30<sup>th</sup> November 2010

Milford haven flow rates 30th November 2010



## System conditions

- High Nominated end of day flows from Milford Haven
- Rising pressures at Milford Haven

## Actions taken

- Locational sells estimated to incur the least cost to the community
- Locational sell actions carried out between 00:38 and 00:50 to reduce flows coming into system at Milford Haven